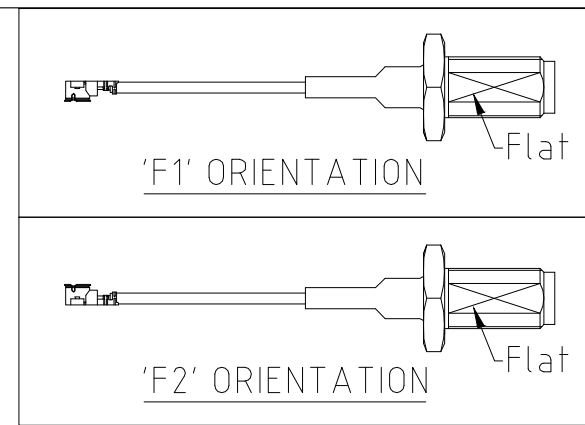


ITEM	Description
1	I-PEX MHF-I CONNECTOR FOR 1.13 CABLE BACKL, 1 PCS
2	HEAT SHRINK: 1 PCS
3	SMA BULKHEAD FEMALE:2133-2A-C0334, 1 PCS



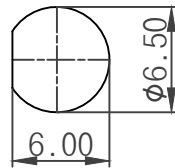
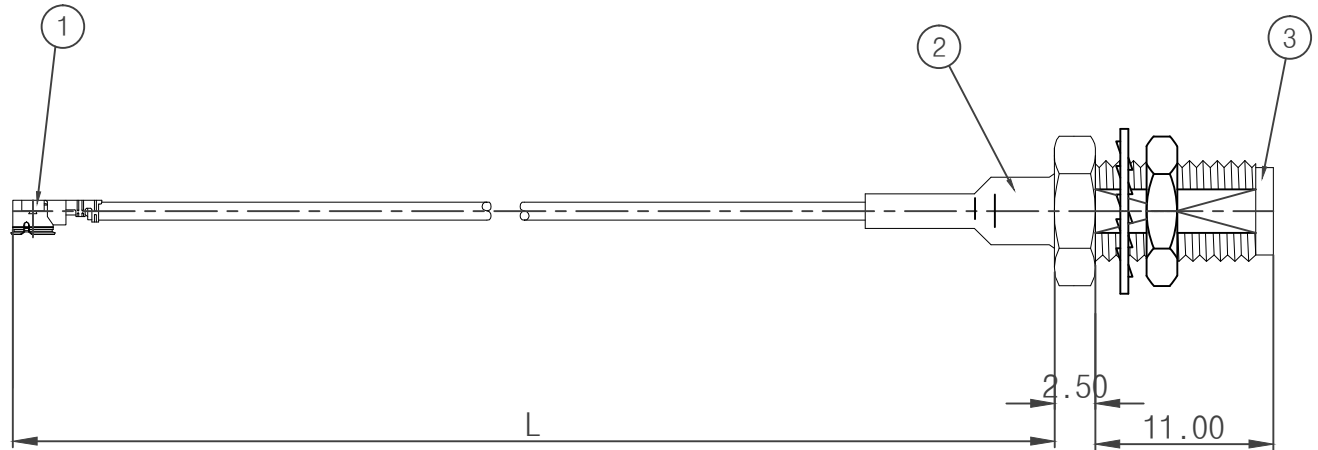
RoHS
Compliant

NOTE:

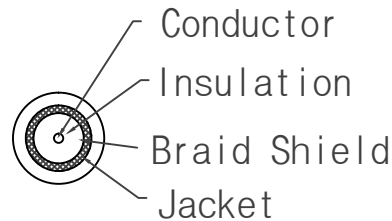
1. THE ORIENTATION OF CONNECTORS ON DRAWING IS FOR REFERENCE ONLY, IF THE ORDER IS LEFT BLANK THE CONNECTOR WILL NOT HAVE FIXED ORIENTATION.

2. FIXED ORIENTATION IS POSSIBLE FOR CABLE LENGTH 25MM TO 220MM. PLEASE SPECIFY THE FIXED ORIENTATION FROM THE ORDER CODE (F1,F2,ETC)

3. WORKING FREQUENCY RANGE : DC-3GHz



MOUNTING HOLE



NOTE1: CABLE SPECIFICATION: (Ø1.13mm CABLE)	
CONDUCTOR	Ø7/0.08±0.02 Silver-Coated copper
INSULATOR	Ø0.66±0.05 TFEP
BRAID SHIELD	Ø0.9 Tinned-Coated copper
JACKET	1.13 FEP (WHITE/BLACK)

ITEM	Description	Date	Revision	Mender
REVISIONS				

REMARKS:

TOLERANCES:
DIM. X.X=±0.5
X.XX=±0.25

REV:	A1	TITLE: SMA BULKHEAD FEMALE CRIMP TO IPEX MHF CRIMP FOR 1.13 CABLE 110mm		
DESIGNED:	Cary	ASSEMBLY DRAWING	SCALE:	FIT
DRAWN:	Cary	DWG No: 85-2133KKRA-1.13	SHEET SIZE:	A4
CHECKED:		DATE: 2015/10/09	UNITS:	mm
APPROVAL:				

